



Northrop Grumman Corporation

Iuka, Mississippi

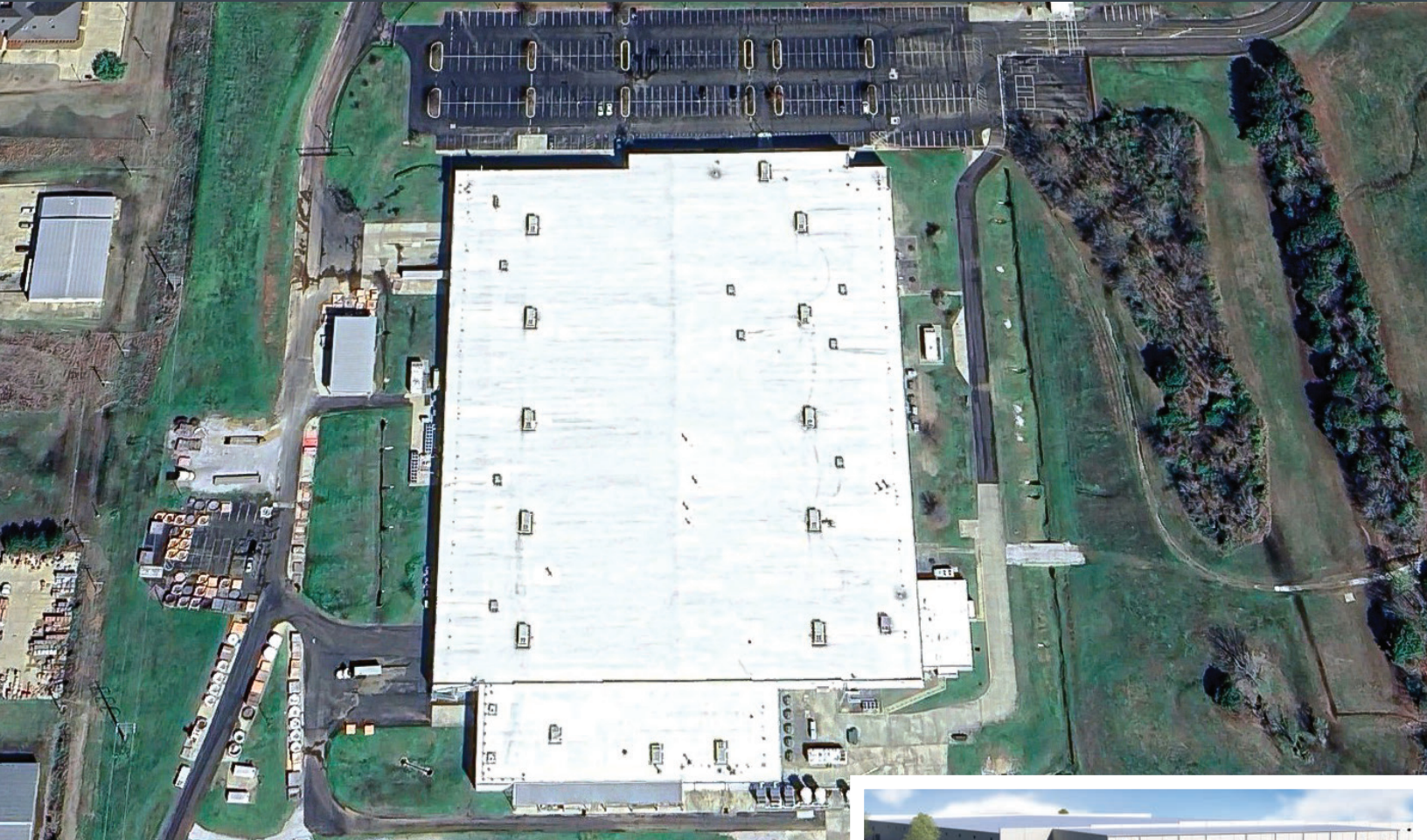
Large Composite Aerospace Structures

H&M Company and its wholly owned self-perform groups have been performing various ongoing projects for Northrop Grumman Corporation at their Iuka, Mississippi facility since 2014 to present. The first project, H&M self-performed the concrete work for a mass foundation machine, which required tolerance of thousandths of an inch.

H&M was also responsible for the engineering and design of six separate and independent renovations inside the existing facility, all requiring Sensitive Compartmented Information Facility (SCIF) certification. H&M value-engineered the solutions to satisfy US Government specifications while holding cost to an acceptable level, achieved in large part by self-performing the electrical and mechanical work. These renovations were constructed while the facility was in full operation, without any interference to their production schedule. In concurrence, a separate SCIF office facility was constructed outside the existing plant.

Another project consisted of the design and installation of new equipment, replete with SCIF requirements. H&M self-performed the equipment installation, electrical and mechanical portions of the project, at the same time adding another area of renovation inside their SCIF Certified manufacturing facility.

H&M is familiar with the challenges of providing certified background checked employees to perform work in highly regulated government facilities such as Northrop Grumman Corporation. Additional project details regarding the work performed at Northrop Grumman by H&M is not available due to corporate and national security restrictions.



GE Aerospace

Batesville, Mississippi

Aircraft Engine Composite Components
200,000 square foot Autoclave Addition

H&M Scope Summary:

- Full Design and Construction Services





Boeing Electronics Company

Corinth, Texas

Military Electronics Manufacturing and Assembly Facility
204,000 square feet

H&M Scope Summary:

- Full Design and Construction Services
- Facility features include:
 - Class 200,000 and 400,000 Controlled Areas and Design
 - Facility and service provisions for Class 10,000 and Class 100,000 Clean Rooms
 - Environmental control of the Controlled Areas and Clean Rooms includes a chilled water cooling system, steam humidification in each air handling unit and high efficiency filters
 - Controlled Areas and Clean Rooms were designed to meet requirements of Federal Standard 209 and Boeing Standard 5703





Olin Corporation Winchester Ammunition

Oxford, Mississippi

Ammunitions Manufacturing Facility
993,000 square feet

H&M Scope Summary:

- Full Design and Construction Services





Gestamp North America

Chattanooga, Tennessee

Automotive Frames Manufacturing Facility
225,000 square feet

LEED® Silver Certified



H&M Scope Summary:

- Full design and construction
- Self-performed concrete, electrical, and structural and miscellaneous steel erection and fabrication
- Project includes 100,000 square feet of heavy-duty metal stamping press area with extensive scrap conveyor tunnels, press pits, cranes, etc., and 90,000 square feet of assembly space



Pacific Manufacturing Tennessee, Inc.

Jackson, Tennessee

Metal Stamping Facility

160,000 square feet

170,000 square foot Expansion

175,000 square foot Expansion

H&M Scope Summary:

- Turnkey construction of facility
- Over 150,000 sf of ~55' tall Stamping Bay
- Over 330,000 sf of Assembly/Shipping area
- Over 30,000 sf of Office Space
- Press foundations for: 3 ea. 500-ton Presses, 3 ea. 1,000-ton Presses, 2 ea. 1,500-ton Presses, 1 ea. 3,000-ton Press
- Over 1,300 lf of Scrap Tunnels beneath the production floor
- Self-performed all Structural Steel

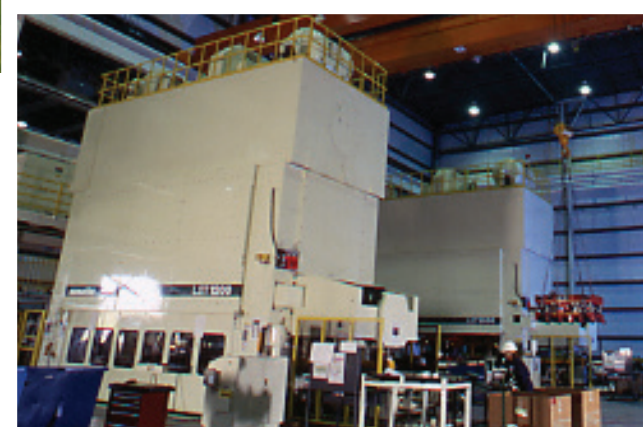




Toyota Boshoku Tennessee, LLC (formerly ARJ Manufacturing)

Jackson, Tennessee

Seat Frames Manufacturing Facility
194,000 square feet



H&M Scope Summary:

- Full Design and Construction
- Design and installation of all equipment foundations
- Construction Engineering for process installation
- Installation of all process piping and power
- Support for commissioning and start-up
- Project features: 277/480 volt, 4000 amp, 3 phase electrical system; compressed air systems; process water systems; extensive press foundations connected by continuous tunnel for a scrap conveyor system; 1200 ton Kamatsu stamping presses; extensive bridge crane system



Pirelli Tire

Rome, Georgia

Automobile Tire Manufacturing Facility and National Headquarters
425,000 square feet

H&M Scope Summary:

- Full Design and Construction Services
- Site Selection Services
- Site Analysis Services
- Process Installation
- Start-Up Services





Nestle Waters North America

Red Boiling Springs, Tennessee

Water Bottling Facility
314,000 square feet

LEED® Silver Certified

H&M Scope Summary:

- Full Design and Construction Services





Marathon Cheese Corporation

Mountain Home, Idaho

Cheese Packaging Facility
204,000 square feet

H&M Scope Summary:

- Full Design and Construction Services





Walmart

Cocoa, Florida

High Capacity Perishable Distribution Center (HCPDC)
608,142 square feet

H&M Scope Summary:

- Full Design Services

The HCPDC has a refrigerated warehouse with multiple cooler zones, office area and maintenance area. The building is a conventionally steel framed structure with corrugated metal deck, insulation and single-ply membrane roofing over the warehouse area. Refrigerated areas are enclosed with low temperature insulated metal wall panels with low temperature doors. The refrigeration system utilizes a central ammonia refrigeration system with penthouse evaporators and condensers. Floor slab is a conventional reinforced mat slab with an underfloor heating system in the freezer rooms. The building is fully-sprinkled with a dry pipe double interlocked system with in-rack sprinklers in the freezer areas, ESFR system in the non-freezer areas and conventional sprinklers in the office and maintenance area. The HCPDC is equipped with vertical dock levelers and dock seals along dock walls. Automatic Storage and Retrieval System (ASRS) and high density storage racks were designed and installed by Symbotic. Hydrogen fuel stations for fork trucks were designed and installed by Plug Power.



Sprouts Farmers Market

Fullerton, California

Multi-Temperature Refrigerated Industrial Distribution Facility

H&M Scope Summary:

- Full Design and Construction Services
- Tenant Improvement of existing facility
- 245,000 square feet expandable to 336,968 square feet including:
 - 151,000 square feet general warehouse space refrigerated at 34°
 - 58,000 square feet general warehouse space refrigerated at 55°
 - 30,000 square feet dock space refrigerated at 34°



Double G. Coatings, Inc.

U.S. Steel / ArcelorMittal JV

Jackson, Mississippi

Galvanized and Galvalume® Process Steel
225,000 square feet



H&M Scope Summary:

- Design and Construction of 280,000 square foot building and all building services
- Design and Construction of all equipment foundations
- Receive, unload and store all equipment
- Install, align, and grout all Line and Off-Line Equipment to vendor specifications and tolerances
- Installation of 1,000-foot Continuous Steel Galvanizing Line including upper and lower pass payoff section, entry and exit accumulators, electrostatic cleaners, furnace APC tower and equipment, Ajax pots, Kohler air knives and equipment, skinpass mill with tension leveler, chemical treatment section and terminal recoiling equipment
- Labor and support for Commissioning and Start-up Assistance



Texarkana Aluminum

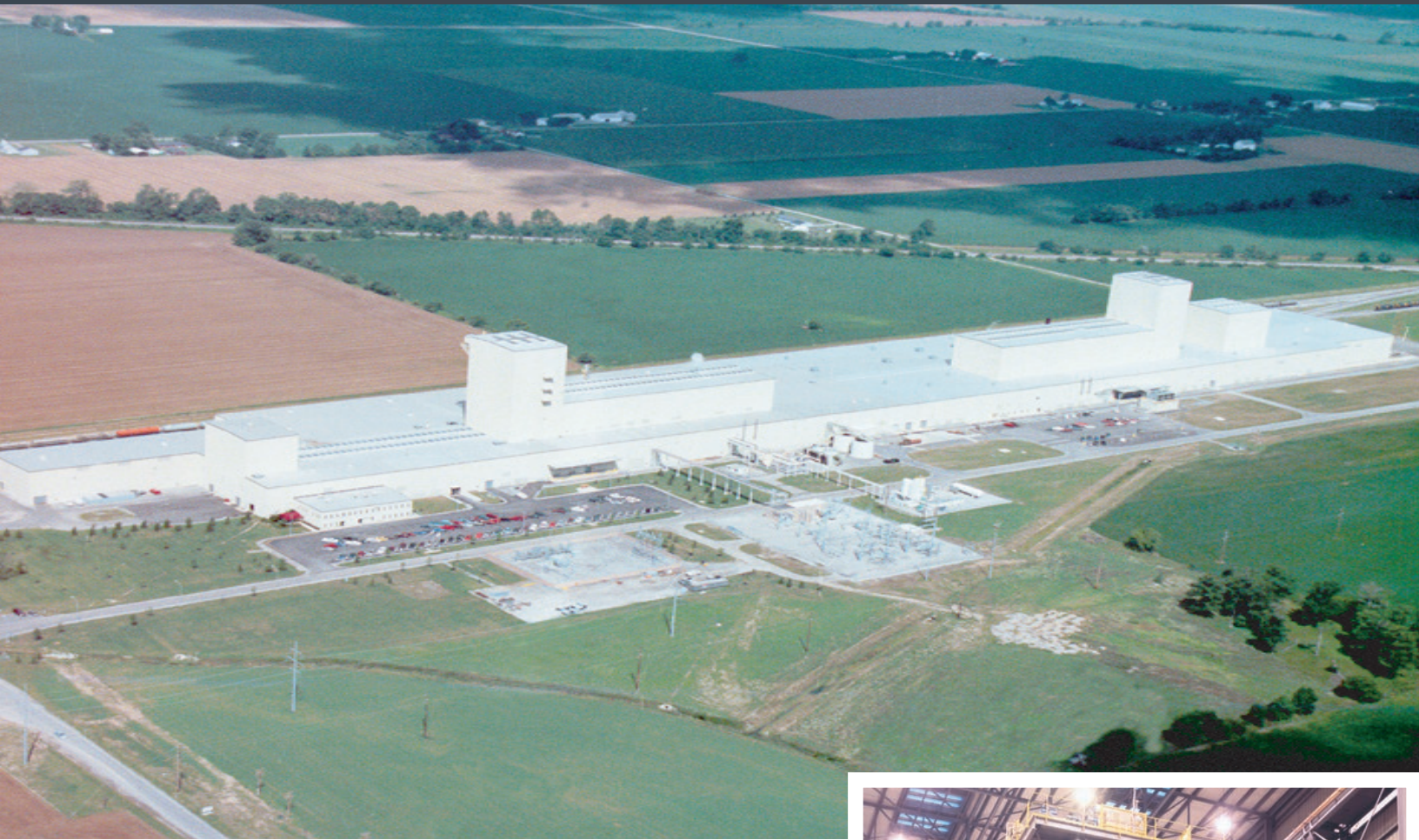
Texarkana, Texas

Aluminum Cold Rolling Mill
210,000 square feet

H&M Scope Summary:

- Designed and built 210,000 sf expansion - turnkey
- Designed and built all building, equipment and process related foundations
 - MINO Mill
 - Fume Exhaust Foundations
 - 6 Annealing Furnaces
 - Leveling Line
 - Heavy Duty Slabs for Coil Storage
 - Tied Building into Existing Facilities
- Equipment and process piping installation
 - Mechanical installation of the MINO 4 high, 2200mm Cold Rolling Mill
 - Mechanical installation of the Air Wash System
 - Mechanical installation of the Athader Leveler
 - Mechanical installation of the Itapac Wrapper
 - Piping supply and install included coolant, pneumatic, hydraulic piping systems
- Self-performed all building and process electrical
- Start-up and Commissioning





U.S. Steel/Kobe Steel Joint Venture PRO-TEC No. 2

Leipsic, Ohio

Hot-Dip Steel Galvanizing Facility
360,000 square feet

H&M Scope Summary:

- Added #2 CGL to Existing #1 CGL without interference
- Designed and built 360,000 square foot building - turn-key
- Designed and built all equipment foundations
- Performed all Construction Engineering for Process Installation
- Installed 600,000 tons per year automotive quality continuous galvanizing line including equipment installation, process piping, process electrical and instrumentation
- Provided labor and support for commissioning
- Involved SMS equipment





Atlas Tube

a Division of Zekelman Industries

Blytheville, Arkansas

Steel Tube Mill - 448,000 square feet
Continuous ERW Tube Mill - 600,000 square feet
Galvanization Line - 118,548 square feet

H&M Scope Summary:

- Full Design and Construction Services
- Except for packaging and plant equipment, the smaller forming and galvanize line used existing equipment shipped in from a facility that was shut down. This required multiple site visits and careful engineering coordination.
- Self-performed the plumbing, HVAC, electrical & equipment installation of both forming and galvanizing lines:
 - Mechanical installation of the 28" diameter, 1" wall thickness Continuous ERW Tube Mill - Heaviest pick was over 500,000 lbs.
 - Piping supply and install included coolant, pneumatic, hydraulic piping systems
 - Electrical included power and controls to all equipment
- Start-up and commissioning



Wieland North America Recycling

Shelbyville, Kentucky

Copper and Copper Alloy Recycling Facility
120,000 square feet

H&M Scope Summary:

- Full Design and Construction Services, including Process Foundations and Utility Distribution of the following:
 - 44,000 square foot Shred and Sort Building line for separating dissimilar metals, which includes a crusher, conveyors, and bag-house. Equipment furnished by American Pulverizer.
 - 32,500 square foot Process Building including a furnace, caster, refined finished goods shipping area, compressor room and slag holding room
 - 20,000 square foot Dry Goods Storage Building
 - 10,000 square feet of Offices, Locker Rooms and Breakrooms





EJ Group

Ardmore, Oklahoma

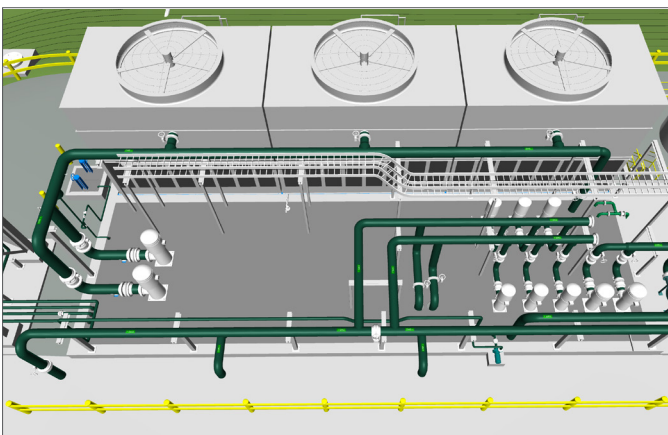
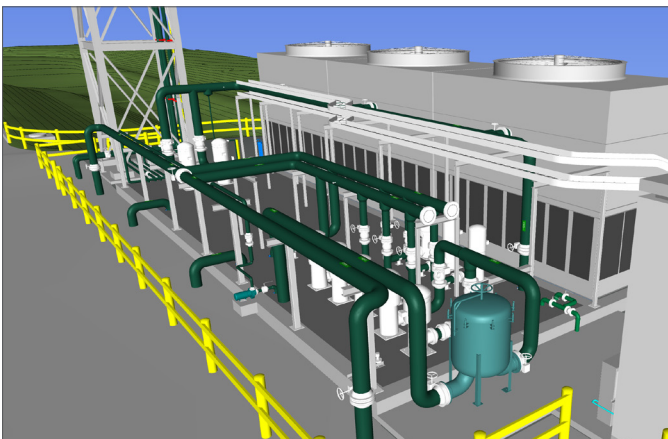
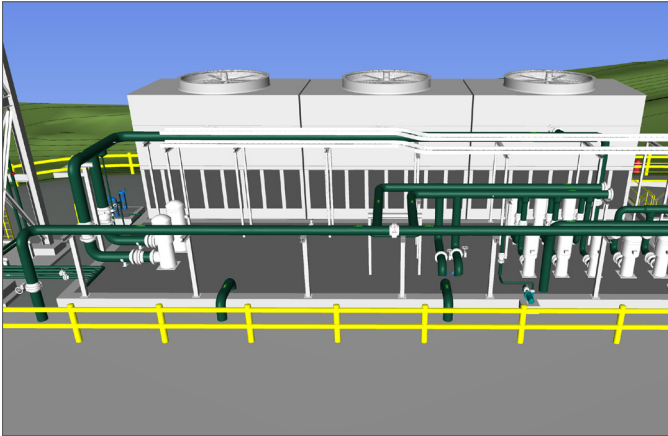
Gray and Ductile Iron Casting including Manhole Covers and Drainage Gates, and Other Manufactured Iron Products
250,000 square feet

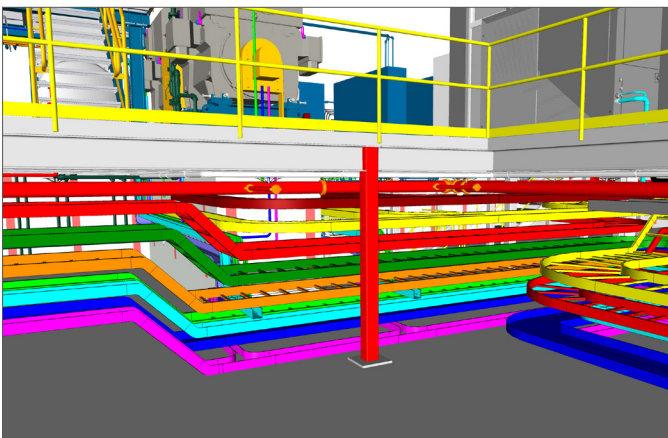
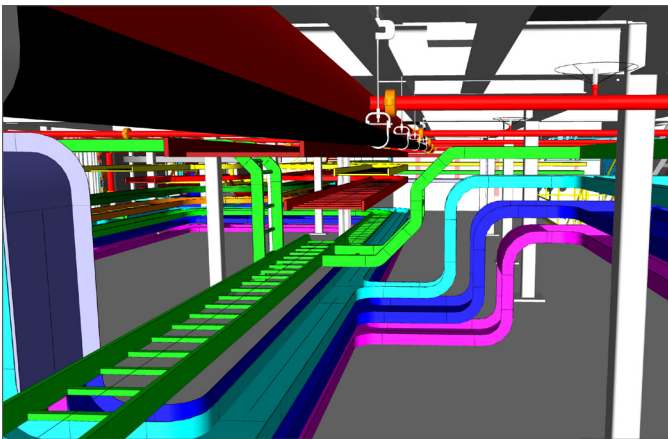
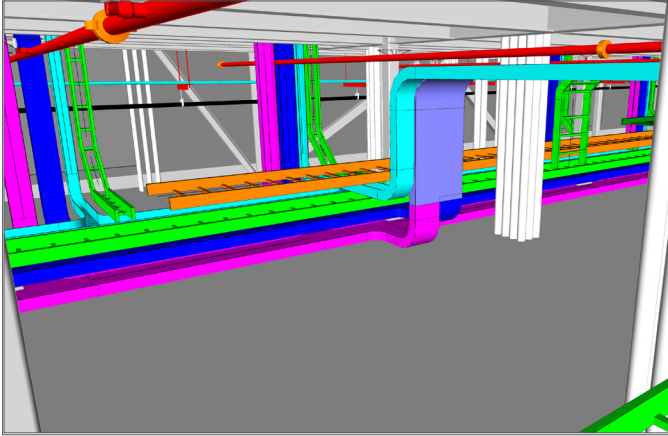
H&M Scope Summary:

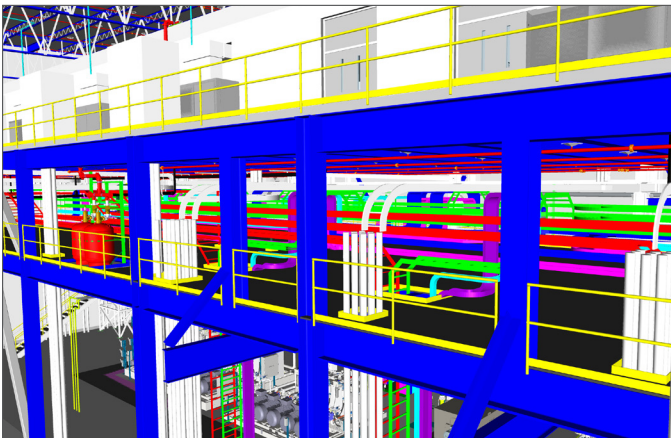
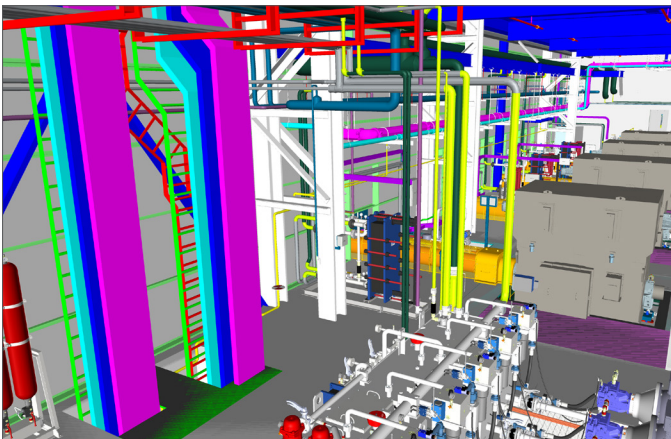
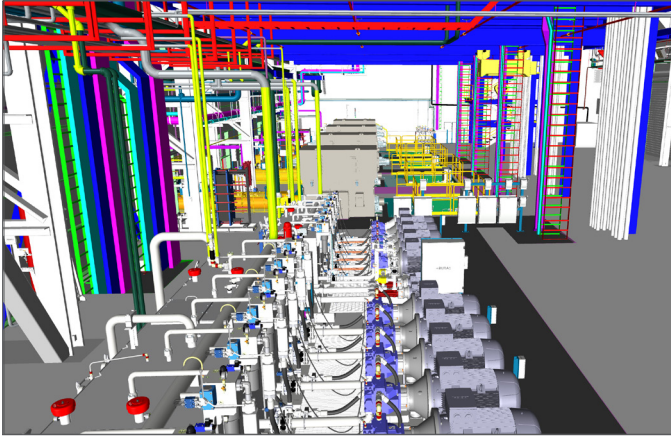
- Full Design and Construction Services
- Site Development Services
- Design of Process Equipment Foundations
- Design of Primary Utility Service Distribution for Process Equipment



Advanced Clean Rooms
3-D Modeling of Structural and Equipment Applications
Specialized Electrical, Mechanical, and Piping Engineering
Painted and Structural Steel
Advanced Coatings and Polishing for Specialized Floor Applications
Advanced Climate Controlled Environments, Etc.







DEMEC - SMYRNA, DELAWARE



50 MEGA WATTS

H&M was awarded the contract for installation of a dual fuel simple cycle expansion at the existing DEMEC facility. Our scope of work included foundations, UG utilities, steel erection, piping, equipment installation, electrical installation and start-up and commissioning. Major equipment included LM-6000, SCR, exhaust stack, CEMS, chiller, fuel gas compressor, etc.

DUKE POWER - PELZER, SOUTH CAROLINA



100 MEGA WATTS

Installation of two LM 6000 turbine generators in an existing power generation facility. Generators were dual fuel (diesel and gas) and used as a backup system for a nuclear plant. Our scope was turnkey from engineering process to generation of power.

KINDER MORGAN - WRIGHTSVILLE, ARKANSAS



550 MEGA WATTS

Installation of civil and structural works, equipment setting and alignments, pipe installation, power and control wiring. Start-up services included turnover books, start-up of all systems and commissioning of plant.

CWL - CITY WATER & LIGHT - JONESBORO, ARKANSAS



50 MEGA WATTS

Installation services for one LM6000 turbine and secondary equipment. Our scope of work included turnkey installation. Spectrum and H&M Industrial Services teamed together to provide CWL a complete power plant.

SPECTRUM ENERGY - CADIZ, INDIANA



150 MEGA WATTS

Installation of turbine generators, all secondary equipment, piping, electrical, and instrumentation. Assisted with start-up and commissioning.

SPECTRUM ENERGY - KENOVA, WEST VIRGINIA



300 MEGA WATTS

General contractor for installation of turbines, secondary equipment, piping, steel erection, electrical and instrumentation.

SPECTRUM ENERGY - SYLACAUGA, ALABAMA



100 MEGA WATTS

Installation of two LM 6000 generators and associated equipment. H&M scope included equipment installation, piping, electrical and start-up for this backup generation facility.

E.ON CLIMATE AND RENEWABLES, WIND FARM - PANTHER CREEK, TEXAS



Project Highlights:

- » 258 Mega Watts
- » Provided complete Balance of Plant (BOP) services
- » 172 GE 1.5 sle WTG's
- » 65 miles of roads installed (2.75 million yards of base material)
- » 300,000 LF of underground collection system
- » 75,000 LF of overhead collection system
- » Over 50,000 CY of concrete placed
- » Over 4,500 tons of rebar placed
- » Broke ground February 2008, completed November 2008

GENON ENERGY STAR II, HIGH CARBON FLY ASH PROCESSING - NEWBURG, MARYLAND



H&M was responsible for the installation of a 65 ton per hour, high carbon fly ash processing facility for GenOn at their Morgantown generation facility. H&M Industrial Services, H&M Construction and H&M Architects/Engineers worked together to provide engineering, procurement, construction, and start-up of the facility. EPC included a 30,000 ton storage dome, truck load out system, reactor, product conveyance system, power and control systems, CEM's system, flue gas treatment, cooling water system, and miscellaneous shops and control rooms. H&M self-performed concrete, piping, electrical, instrumentation, steel erection, mechanical equipment installation and checkout of facility.

H&M received an "Excellence in Concrete Award" in 2011 for this project by the Maryland Chapter of the American Concrete Institute for its recognition of the creative use of concrete.

SANTEE COOPER/SEFA GROUP STAR II, COAL FLY ASH RECYCLING - GEORGETOWN, SOUTH CAROLINA



Coal Fly Ash Recycling – up to 400,000 tons per year. H&M was selected to design-build the ash beneficiation STAR process for The SEFA Group at the Santee Cooper Power Plant – Winyah Generating Station. H&M self-performed the concrete, electrical, steel supply and erection, mechanical and piping.