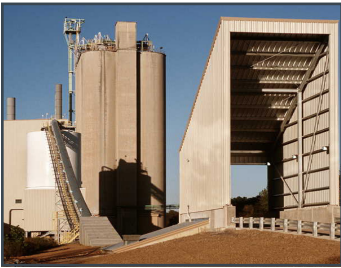


HOLCIM CEMENT - FAIRFIELD, ALABAMA



This facility in Fairfield, Alabama, produces 77 metric tons of GranCem cement per hour.

H&M installed a 1,600-ton ball mill, one of the largest of its kind in North America.

H&M's services included: construction engineering, project construction management, self perform civil and mechanical installations, and start-up and commissioning services.

The facility is only the third facility of this type in the United States.

ASH GROVE CEMENT - CHANUTE, KANSAS



This project is highlighted by a 1,400-ton, two compartment ball mill driven by a 7200 horsepower inline motor.

H&M's services included: architectural, mechanical, and electrical engineering, project construction management, self perform civil and mechanical installations, start-up and commissioning services.

Additionally existing structures and equipment required substantial upgrade and retrofit to accommodate the new mill all of which was performed by H&M.

HEIDELBERG MATERIALS - PORT CANAVERAL, FLORIDA

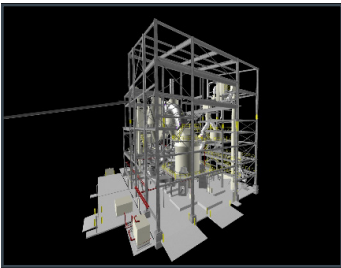


This project included a 1,400-ton single compartment ball mill driven by an 8000 horsepower right angle drive gearbox. The project also features two 500-ton inverted cone cement segment storage silos.

H&M worked with FLSmidth, the turnkey equipment vendor, to design and construct the entire facility.

H&M's services included: all construction engineering, project construction management, self perform civil, structural, electrical and mechanical installations, and start-up and commissioning services.

The H&M crews achieved over 200,000 safe work hours.

HEIDELBERG MATERIALS - UNION BRIDGE, MARYLAND

Lehigh selected H&M as the design-build contractor for their new finish mill line at their Union Bridge, Maryland facility. The new mill consists of an FLSmidth OK 36-4 Vertical Finish Mill.

Substantial retrofit and upgrade of existing structures and in feed systems took place to accommodate this new mill line.

H&M's services included: all construction engineering, project construction management, self perform civil, structural and mechanical installations, and start-up and commissioning services.

FLORIDA ROCK (NOW VULCAN MATERIALS COMPANY) - TAMPA, FLORIDA

H&M installed a new 3,000 square foot, two-story MCC room within an existing production area to accommodate electrical upgrades of an existing facility.

The new MCC room had to be installed during full production with no shutdown of the existing lines for construction operations.

H&M's services included: project construction management, self perform civil and structural installations.

AMBASSADOR SERVICES (NOW ENSTRUCTURE) - PORT CANAVERAL, FLORIDA

H&M installed a new 3700 foot long overland bulk conveying system in Port Canaveral, Florida.

The new conveying system was installed to transport imported aggregates from ocean transport vessels to an aggregate load out and storage terminal.

The conveying system included three radial stackers and over 3,000 feet of an enclosed aerial truss section through a pedestrian traffic area.

The conveyor system is designed to transport approximately 1,800 tons of aggregate per hour.

H&M's services included: project construction management, self perform civil, structural and mechanical installations, and start-up and commissioning services.

BUZZI UNICEM USA - CHATTANOOGA, TENNESSEE



 **Buzzi Unicem USA**

H&M was selected by Buzzi Unicem USA, Inc. to remove portions of their existing clinker cooler and install a completely new movable grate cooling chamber as well as lump breaker and associated ancillary equipment.

This project was performed under plant shut down conditions where extensive safety, planning and precision were required.

H&M utilized in-house resources to fabricate and install all structural steel and ductwork as well as installation of all mechanical and piping works.

This project was completed on time and allowing Buzzi to resume production of cement clinker, raw material required to make Portland Cement.

OLDCASTLE - MARBLE FALLS, TEXAS



 **Oldcastle Infrastructure**
A CRH COMPANY

H&M was selected by Oldcastle to construct a 21,120 square foot cement bagging facility located in Marble Falls, Texas.

H&M self-performed or managed subcontractors for the site development, building construction, and mechanical installation.

GCC - ODESSA, TEXAS



 **GCC**

This project consisted of a new K2 Pyroprocessing Line for GCC Permian, LLC (GCC) in Odessa, Texas.

As part of the Design-Build scope, H&M worked closely with GCC and the process technology provider thyssenkrupp Polysius North America, Inc. (Polysius) to perform all construction engineering to include: Civil, Structural, Mechanical, Electrical, Piping, Architectural, and 3D modeling.

Additionally, H&M performed all construction operations to include self-perform services for: Concrete, Structural fabrication, Structural erection, Mechanical, Piping, and Electrical.

NATIONAL CEMENT COMPANY - RAGLAND, ALABAMA



H&M was selected by National Cement Company, a Vicat Group subsidiary, to design and construct a new K2 Pyroprocessing Line.

H&M responsibilities for this project included complete construction design, structural steel supply and complete installation of all concrete, structural, mechanical, piping and electrical operations for a new pyroprocessing line.

Project included:

- Raw material automated stacker and reclaimer system
- Vertical raw material pulverizing mill
- 5-stage preheat/pyroprocessing tower and associated waste gas handling systems
- Rotary kiln
- Moving grate product clinker cooler
- Process air-to-air heat exchanger system and gas handling and conveying systems to tie back into existing production finish mills

ASH GROVE CEMENT - MIDLOTHIAN, TEXAS



This was a plant modernization project conversioning the existing kiln line from wet to dry process to include the following major processes: New Preheat Tower, Retrofit of Existing Kiln, New Cooler/Burner Building, New Gas Conditioning System, New Coal Mill Preparation and Feed System

As part of a complete Pyro-processing upgrade/retrofit project for Ash Grove Cement, H&M performed the complete turnkey design, build and start-up of a new FLSmith clinker production line.

The project required substantial retrofit of existing structures and processes to accommodate the new pyro line all while assuring Ash Grove maintains full production with limited downtime.

In addition to being the overall project construction Design Builder, H&M self-performed the following with its in-house design resources: Architectural, Civil, Structural, Mechanical - HVAC & Piping, and Electrical; and the following construction crafts: Concrete, Steel Fabrication & Erection, Mechanical Erection, Piping, and Electrical-Power & Controls.