



U.S. Steel/Kobe Steel Joint Venture PRO-TEC No. 2

Leipsic, Ohio

Hot-Dip Steel Galvanizing Facility
360,000 square feet

H&M Scope Summary:

- Added #2 CGL to Existing #1 CGL without interference
- Designed and built 360,000 square foot building - turn-key
- Designed and built all equipment foundations
- Performed all Construction Engineering for Process Installation
- Installed 600,000 tons per year automotive quality continuous galvanizing line including equipment installation, process piping, process electrical and instrumentation
- Provided labor and support for commissioning
- Involved SMS equipment





Granges Aluminum

Huntingdon, Tennessee

Aluminum Rolling Mill

H&M Scope Summary:

- Mechanical installation of the MINO 4 high, 90" thin gauge Cold Rolling Mill
- Mechanical installation of the Air Wash System
- Piping supply and install included coolant, pneumatic, and hydraulic piping systems
- Start-Up and Commissioning





EJ Group

Ardmore, Oklahoma

Gray and Ductile Iron Casting including Manhole Covers and Drainage Gates, and Other Manufactured Iron Products
250,000 square feet

H&M Scope Summary:

- Full Design and Construction Services
- Site Development Services
- Design of Process Equipment Foundations
- Design of Primary Utility Service Distribution for Process Equipment





Borusan Berg Pipe

Mobile, Alabama

Spiral Pipe Mill
200,000 square feet

H&M Scope Summary:

- Full Design and Construction Services
- Self-performed concrete foundations, very complicated and heavy machinery foundations for the spiral pipe machine and large pit for hydrotesting equipment (pressure testing), several hundred piers for conveyor rollers for pipe conveyance, miscellaneous carpentry and structural steel (through an affiliated company).
- The project also consisted of approximately 10,000 square feet of administrative office, and 30,000 square feet warehouse reserved for raw material steel coil storage. Finished product (24" to 60" spiral welded pipe) was stored outside in specially designed berms and lagging.
- H&M Industrial Services, Inc. (HMIS) installed equipment, piping, and oversaw the electrical installation of equipment electrical and controls.





Texarkana Aluminum

Texarkana, Texas

Aluminum Cast House
160,000 square feet

H&M Scope Summary:

- Designed and built all building and equipment foundations:
 - Two Vertical Casting Pits – Depth of 40' to bottom of foundation from FF with cylinder another 40' in depth – Total 80'
 - Four Melting Furnaces
 - Two Tilter Holder Furnaces
 - Bag House Foundations
- Designed and built all utility services for building and process:
 - Mechanical and electrical:
 - New High Pressure Gas Service
 - New Primary Power from New Substation
 - Individual Electrical and Hydraulic Rooms for Furnaces and Casting Pits x4
- Equipment Install:
 - Wagstaff Vertical Casting Equipment x2
 - Pending Approval on Electrical Process Install for all equipment
 - Mechanical installation of the Vertical ingot caster supplied by Wagstaff
 - Piping supply and install included pneumatic and hydraulic piping systems
- Electrical included power and controls to all equipment
- Start-up and commissioning





Texarkana Aluminum

Texarkana, Texas

Aluminum Cold Rolling Mill
210,000 square feet

H&M Scope Summary:

- Designed and built 210,000 sf expansion - turnkey
- Designed and built all building, equipment and process related foundations
 - MINO Mill
 - Fume Exhaust Foundations
 - 6 Annealing Furnaces
 - Leveling Line
 - Heavy Duty Slabs for Coil Storage
 - Tied Building into Existing Facilities
- Equipment and process piping installation
 - Mechanical installation of the MINO 4 high, 2200mm Cold Rolling Mill
 - Mechanical installation of the Air Wash System
 - Mechanical installation of the Athader Leveler
 - Mechanical installation of the Itapac Wrapper
 - Piping supply and install included coolant, pneumatic, hydraulic piping systems
- Self-performed all building and process electrical
- Start-up and Commissioning





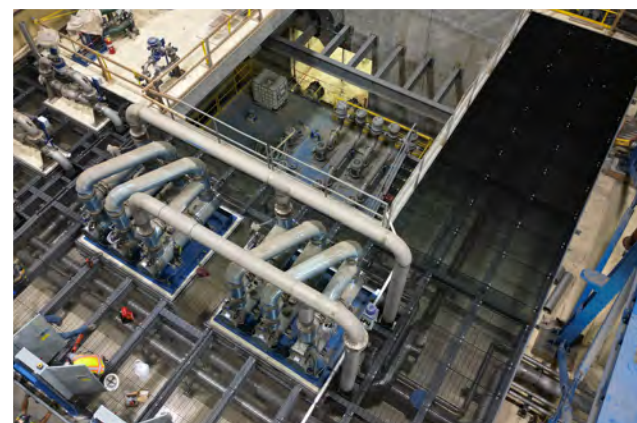
Texarkana Aluminum

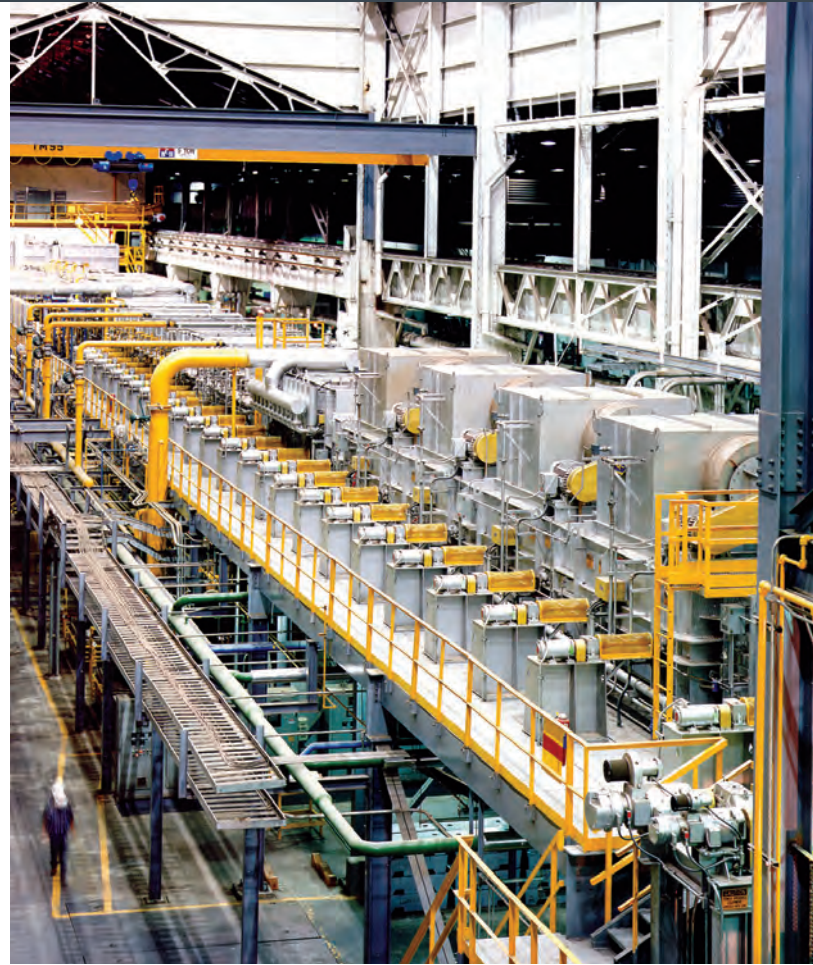
Texarkana, Texas

Hot Mill Expansion and Improvements to Existing Preheat Area
89,772 square feet

H&M Scope Summary:

- Designed and Built all building, equipment, and process related foundations for new HCM
 - Mino Mill
 - Roll Grinder
 - Fume Exhaust Foundation
 - Heavy Building Structural for 150T Crane to be able to set Mill Housings.
 - Tied new building into existing facilities
 - 30' Depth of deep foundation for Transfer Tank
 - New Mill connects to existing Hot Mill
- Designed and Built all Utility Services for Building and Process
 - All process installed turn-key
- Designed Civil Plans for New Substation that will provide power for Cast House and Hot Mill
- Redesigned facility civil/drainage plans to accommodate new buildings on-site.
- Mechanical installation of the MINO 2000mm Continuous Hot Tandem Mill
- Mechanical installation of the Air Wash System
- Piping supply and install included coolant, pneumatic, hydraulic piping systems
- Electrical included power and controls to all equipment
- Start-up and commissioning





U.S. Steel

Fairfield, Alabama

Continuous Hot Dip #5 Galvanizing and Galvalume® Line
225,000 square feet

H&M Scope Summary:

- Building design
- Equipment foundation design
- Construction engineering for process installation
- Site preparation, including grading, storm water drainage and new roadways
- Extensive demolition of adjacent buildings and existing equipment foundations
- Dismantling and removal of the existing decommissioned annealing line, removal and refurbishing of the adjacent box annealing facility to handle coil storage
- Extensive upgrading of the existing utilities and the addition of new nitrogen and cooling water system
- Relocation of an existing chrome deposit facility with a minimum outage
- Renovation of the line building and coil storage warehouse, including new HVAC and lighting systems
- Design and construction of additions to the line and warehouse buildings
- Extensive structural steel and concrete modifications to existing buildings
- Construction of an indoor/outdoor rail dock
- Receive, unload and store all equipment
- Install all furnace structure, APC tower structure and exit accumulator structure. Back-weld all structure after vendor verification of alignment.
- Install, align and grout all line equipment and off-line equipment to vendor specifications and tolerances.
- Installation of the galvanizing/Galvalume® equipment including foundations, piping systems and power, control and instrumentation services



Wieland North America Recycling

Shelbyville, Kentucky

Copper and Copper Alloy Recycling Facility
120,000 square feet

H&M Scope Summary:

- Full Design and Construction Services, including Process Foundations and Utility Distribution of the following:
 - 44,000 square foot Shred and Sort Building line for separating dissimilar metals, which includes a crusher, conveyors, and bag-house. Equipment furnished by American Pulverizer.
 - 32,500 square foot Process Building including a furnace, caster, refined finished goods shipping area, compressor room and slag holding room
 - 20,000 square foot Dry Goods Storage Building
 - 10,000 square feet of Offices, Locker Rooms and Breakrooms

